

# MONTHLY MEMBERSHIP PROGRESS REPORT

District 318 A

Results as of: 12/31/2023

GMT:

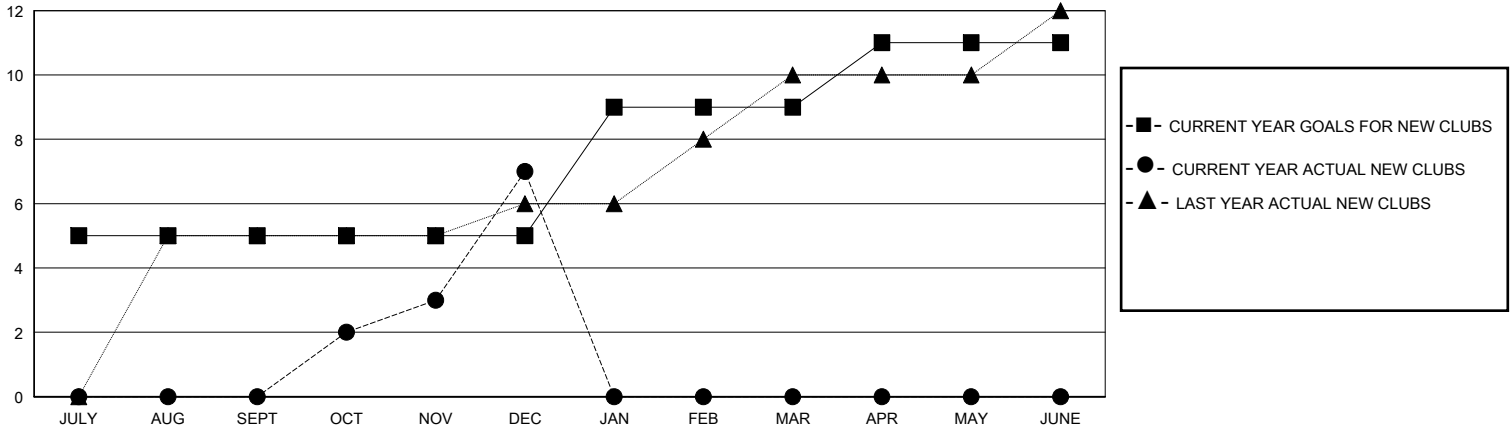
LOCATION INDIA

GMT CA

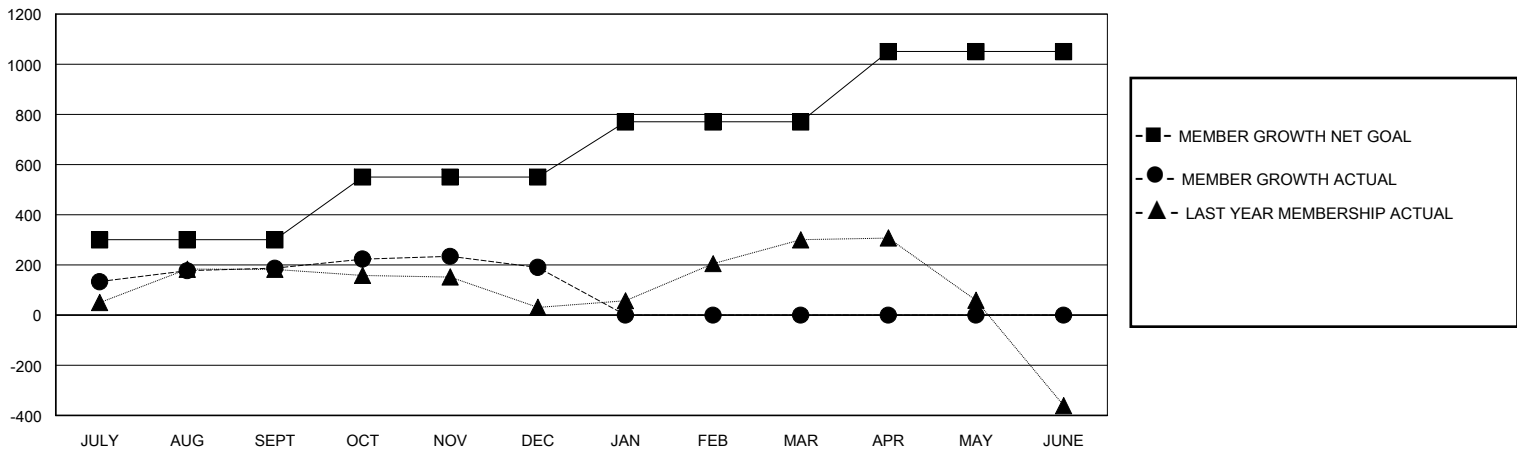
Clubs			
RESULTS FOR 2023-2024			
QUARTER	NEW CLUB GOAL	NEW CLUBS	DROPPED CLUBS
JULY/AUG/SEPT	5	0	1
OCT/NOV/DEC	0	7	3
JAN/FEB/MAR	4	0	0
APR/MAY/JUNE	2	0	0

Members			
RESULTS FOR 2023-2024			
QUARTER	MEMBER GROWTH NET GOAL	MEMBER GROWTH ACTUAL	DROPPED MEMBERS ACTUAL (including transfers)
JULY/AUG/SEPT	300	308	96
OCT/NOV/DEC	250	267	252
JAN/FEB/MAR	220	0	0
APR/MAY/JUNE	280	0	0

GOALS AND ACTUAL NEW CLUBS CUMULATIVE



GOALS AND ACTUAL MEMBERS CUMULATIVE



DROPPED CLUBS: 4

90 CLUBS OF 160 ADDED 1 OR MORE NEW MEMBERS

GENDER DISTRIBUTION

MALE 3,332 (75.78%)  
FEMALE 1,064 (24.20%)

DROPPED MEMBERS

DECEASED	16
CLUB CANCELLED	56
OTHER	276
<b>TOTAL</b>	<b>348</b>

[CLICK HERE FOR CUMULATIVE MEMBERSHIP DATA](#)

TOTAL FAMILY UNIT MEMBERS	1,754
FAMILY MEMBERS PAYING HALF DUES	935